

'The Colosseum Court at Mediterra'

2012 AMERICAN SPORTS BUILDERS ASSOCIATION DISTINGUISHED TENNIS FACILITY

2013 USTA OUTSTANDING TENNIS FACILITY



BAUER CONSULTING

Tim Bauer, Design / Construction / Management
Naples, Florida



2013 USTA ANNUAL AWARDS, US OPEN, NEW YORK

*Katrina Adams, USTA President/CEO, Tim Bauer, Design/Build
USTA Technical Committee Annual Meeting*





*American Sports Builders Association Awards
2012 Distinguished Tennis Facility*





BAUER CONSULTING

'Bauer Consulting is a visionary company built for those striving for excellence through innovation and education'

Bauer provides complete services in sport and wellness development from concept and daily operations to athletic education.



SPORT & WELLNESS FACILITY MANAGEMENT

*Consulting Reviews and Efficiency Assessments
Visionary Concepts, Design and Construction,
Leadership, Staffing, Operations, Retail,
Owner/Board Guidance and Visionary Future Planning*

EDUCATIONAL SERVICES

*Personal and Team Sports Instruction and Athletic Development,
Sport Psychology, Fitness Training, Injury Care,
Executive, Team, Coach, and Parent Education, College Placement,
Video and On-Line Education, Sports Equipment and Technologies*



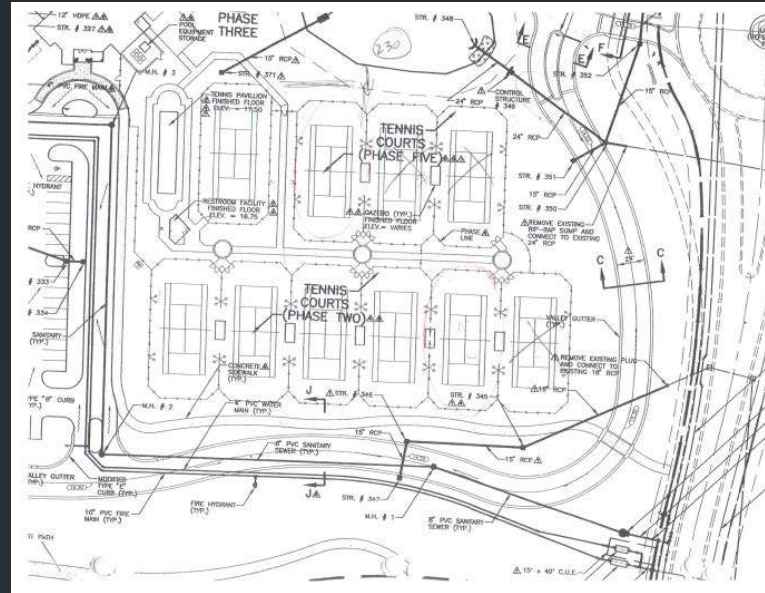
The Sports Club at Mediterra:

Sports and Wellness in a natural setting





The Proposed Site: 'The Colosseum Court'



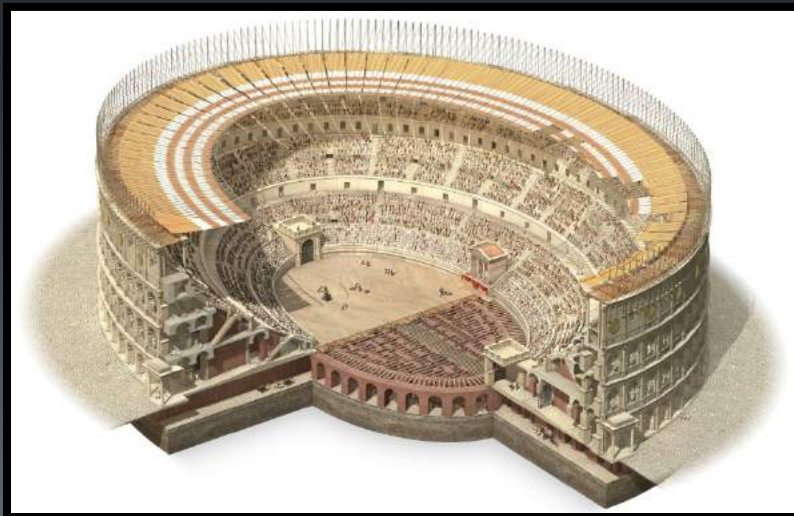


*Matching Aesthetics:
The Mediterra Sports Club and Community*



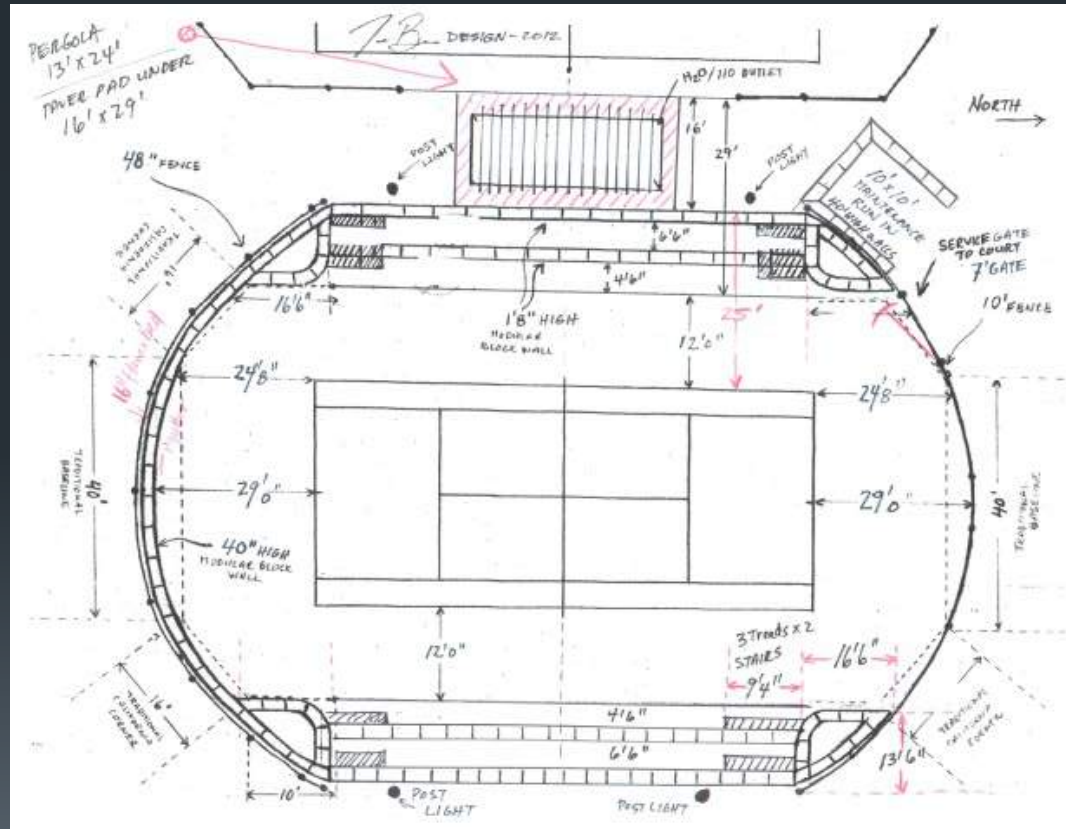


The Ancient Roman Colosseum: Bauer's Inspiration for Design





Breaking free of 'The Box'
'The Colosseum Court'
Tim Bauer Design





*Rethinking Tennis Court Design:
Making tennis courts more interesting
Breaking out of 'The Box'*





Leading through Innovation

*'Bauer designed curves to replace California Corners'
Improving playing conditions and maintenance.
Natural plantings, elevated views and walls as seating.*





Site Transformation:

'The Colosseum Court' and new court 5





Design Differently: A Curved Court

- 40 inch sunken court surface*
- 8 foot longer playing surface area*
- 2 tiered chair height walls for sitting*
- Improved spectator viewing and maintenance capabilities*
- Curved stone walls providing unique acoustic qualities*





Overcoming Construction Obstacles: (14 inches of rain in 72 hours)

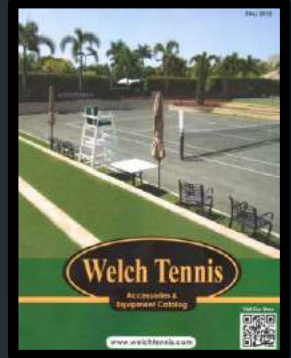




Managing Construction Excellence

'New World Design - Old World Workmanship'











Designing Functional Amenities Matching the Environmental Aesthetics





Old World Workmanship

ARCHITECTURAL
STRUCTURES
INC.





Player and Spectator Comforts





*Custom Details:
Fitted Rounded Fences, Windscreens, Planters,
and Court Details*



14" **MEDITERRA** 45"
12"





A Functional Vision: Exceptional small tennis venues

sports and recreation

Sports director brings innovation to Mediterra

Love of athletics, design come together with tennis courts that favor great views of the action and exciting scenery.

story by andrea stelson
Special to Coastal Life

Tim Bauer doesn't think his tennis world is rectangular. He sees the world as round.

That's why Bauer thought about round corners when he started planning for a new tennis court at Mediterra.

"For years no one has gone outside the typical box," said Bauer, the sports director at Mediterra. "There are a lot of designs for golf courses, but not for tennis. This court is rounded at the back, and you almost never see a court like this. It's unique and it gives us more playing room."

Bauer wanted to hold big tennis matches at Mediterra, but for that he'd need lots of seating. The problem was he didn't want the seating to mar the scenery when there were

there is no show event, I want it to look beautiful," Bauer said. "I want it to look as good as a day when there is an exhibition."

The court is also 40 inches below grade level, making for better viewing and better acoustics.

"I always had a pretty deep interest in design and architecture, and I when I looked at it I thought we had a chance to do something unique," Bauer said. "I wanted to break new ground with courts because I thought they were boring, but it has to play well as well as look exciting."

On an average day when

Wolfgang Diehl, Mediterra's men's club champion, is excited to have a sports director with a unique way of thinking. "Tim is spectacular," Diehl said. "He is enthusiastic, he is visionary, he is a fantastic coach, he has all the ingredients to spruce up our tennis. It is so wonderful that we were able to get him. I have been around tennis for 40 years, and he is the best I have known."

Bauer studied architecture and sports science at Furman University in South Carolina. He got his master's degree in sports psychology and motor learning from the University of Florida.

Besides designing the tennis courts, Bauer also designed new bocce courts at Mediterra. He is currently working on upgrading the curcle equipment in the gym and wants to design a new fitness program there.

Bauer's experience in the sports world extends around the nation. He taught at University of Florida coaching the

men's and women's tennis pro tours. He was also an assistant coach of the women's team at Florida State and he coached the women's team at Michigan state.

"I love travel," Bauer said. "That type of elite coaching was something I definitely identified with."

Things changed when Bauer, 41, and his wife started a family. He wanted a job with less travel and more time with his children, ages 6, 3 and 8 months.

He recently re-designed the pro shop to bring people through the shop past a coffee machine to create a friendly meeting place for players.

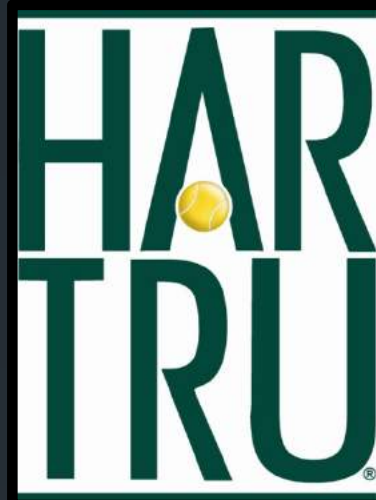
"I didn't get into it to be like everybody else," Bauer said. "Mediterra had that ambition to welcome that with open arms."

Luis Blanco loves the unique improvements Bauer is bringing to Mediterra. "It looks terrific," Blanco said. "Things have improved significantly."

IF YOU GO

- **What:** Mediterra Sports Club
- **Where:** 15785 Corso Mediterra Circle
- **Where:** Naples
- **Info:** 254-3638, www.mediterranaples.com







'Honoring Nature'

*Rounded Walls, Local Stone Products,
Har-Tru Playing Surface, Green Landscaping
and a 'Living Wall' as Windscreen*





The Living Wall Windscreen

Locally Grown Green Landscaping





Caring for the Environment (and those Using it)

Trash and Ball Recycling, AED Unit Courtside
Water Comfort Station, Shoe Cleaning





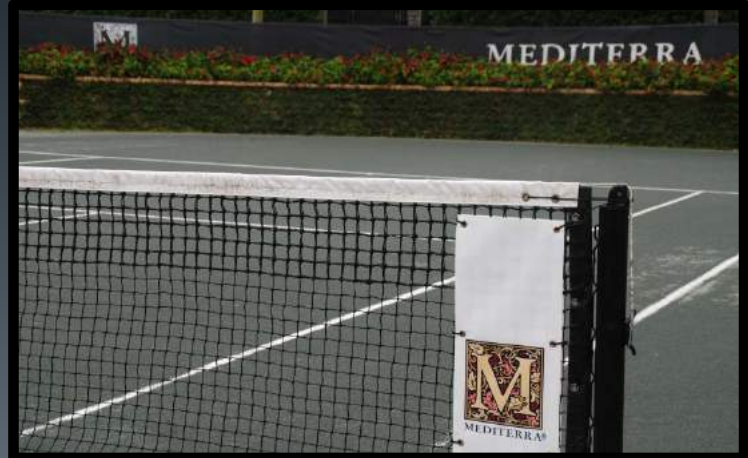
Pedestrian Friendly:

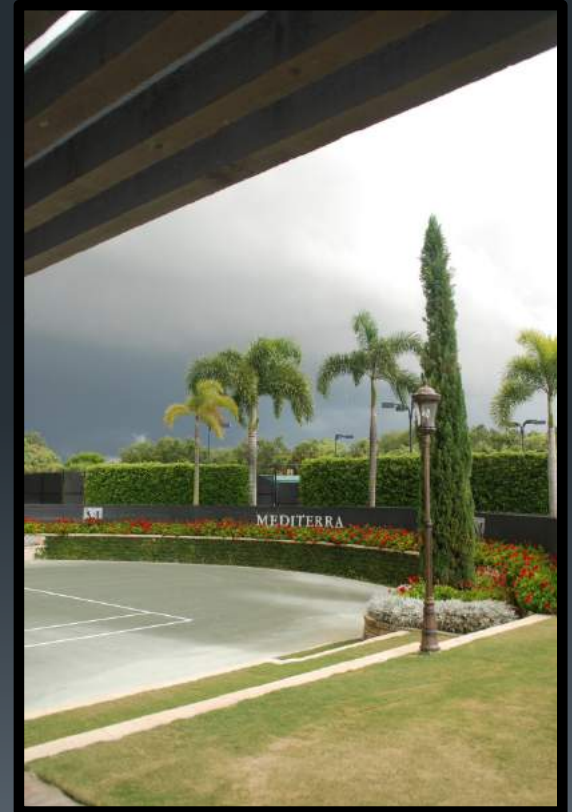
Bike racks, spectator shelter & water readily available to encourage a healthy lifestyle





*Thoughtful Accessible Design:
Rear maintenance alcove and entrance for
Special Populations and Wheelchair access
considering both spectators and athletes*







Social Impact: *A court becomes a social gathering place*





Sharing the Game:

*Special Events with World Number 1's
Venus Williams, Mats Wilander*





Healthy Community Activities:


Bringing the community together through tennis

MEET VENUS WILLIAMS AS SHE PRESENTS
HER SPRING 2012 COLLECTION

ELEVEN

BY VENUS WILLIAMS

DECEMBER 1, 2012
TOWN SHOW AND BEGINS 2012 COLLECTION
PRESENTATION BY VENUS
2:00 - 4:00 PM
HOSTED BY THE SPORTS CLUB AT MEDITERRA
15720 CORSO MEDITERRA CIRCLE
NAPLES, FLORIDA 34110
888-9 551-262-5667 OR USBECCA@ELEVENBYVENUS.COM





A Great Tournament Venue:

The colosseum court perfectly suited to host all junior, adult, league and professional competitive play





Competitive Recreation: USTA League Tennis at Mediterra





Venus Williams visits Mediterra

December 1, 2012







Mats Wilander visits Mediterra

March 3, 2012





Mats Wilander vs Mikael Pernfors

Exhibition 2013





Grassroots: Involving Children







Our Children: The future of the game

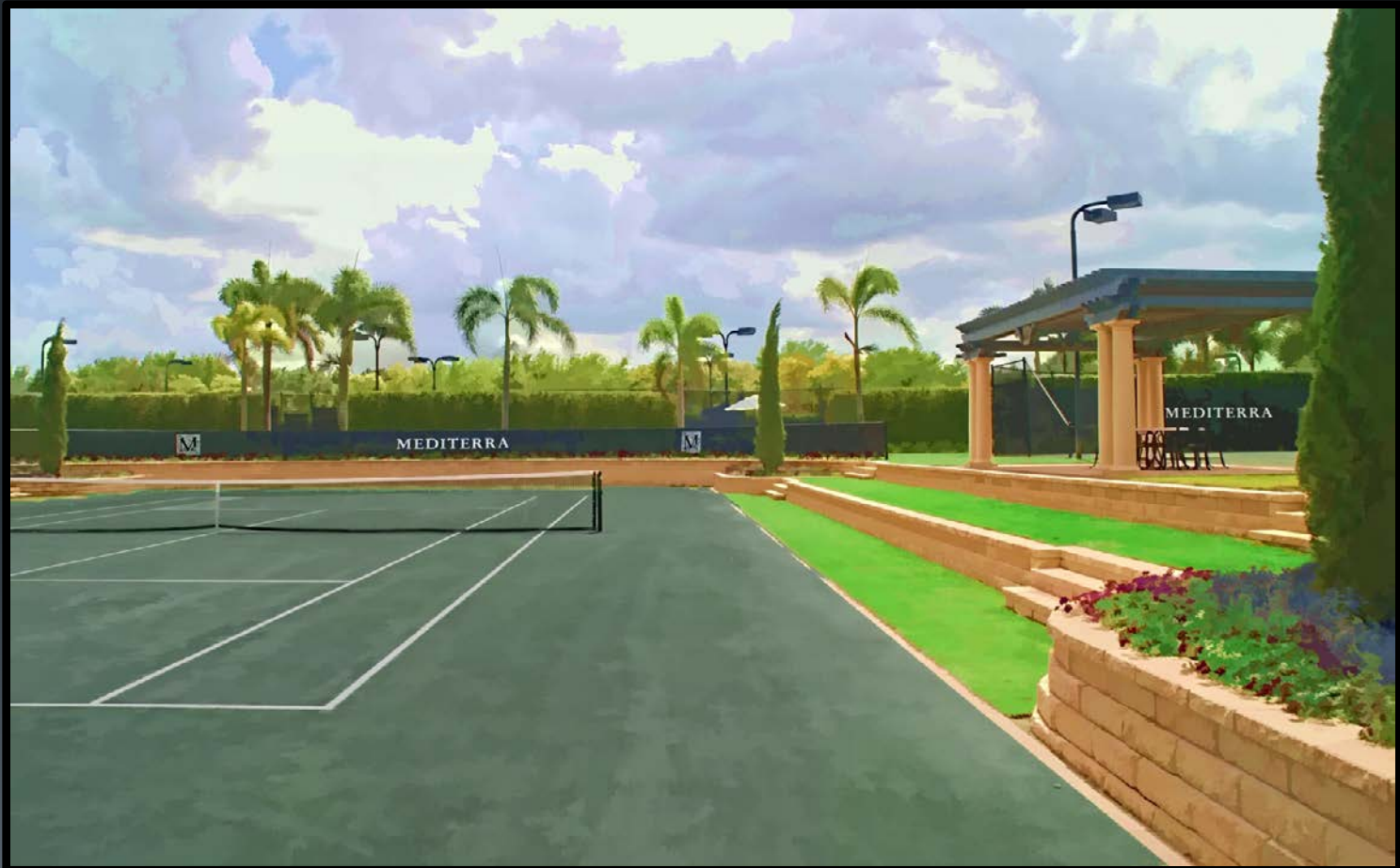






Real Estate:

A tennis icon increasing home sales in the Mediterra community attracting wellness focused buyers. Resulting growth of membership sales, participation and overall community satisfaction





Wellness as a Lifestyle:

Wellness is the most forceful trend for the future.





The Colosseum Court

Tim Bauer Design

*2012 American Sports Builder's Association
Distinguished Facility*

2013 USTA Outstanding Facility Award

